

The Uniform Chart of Accounts

Standardized Financial Data to
Advance Public Health Practice

Public Health Activities & Services Tracking
(PHAST)

PHASTdata.org

Definition

The Uniform Chart of Accounts for Public Health is

- a standard
- for reporting expenditures and revenues (FTE optional)
- for individual public health programs and capabilities

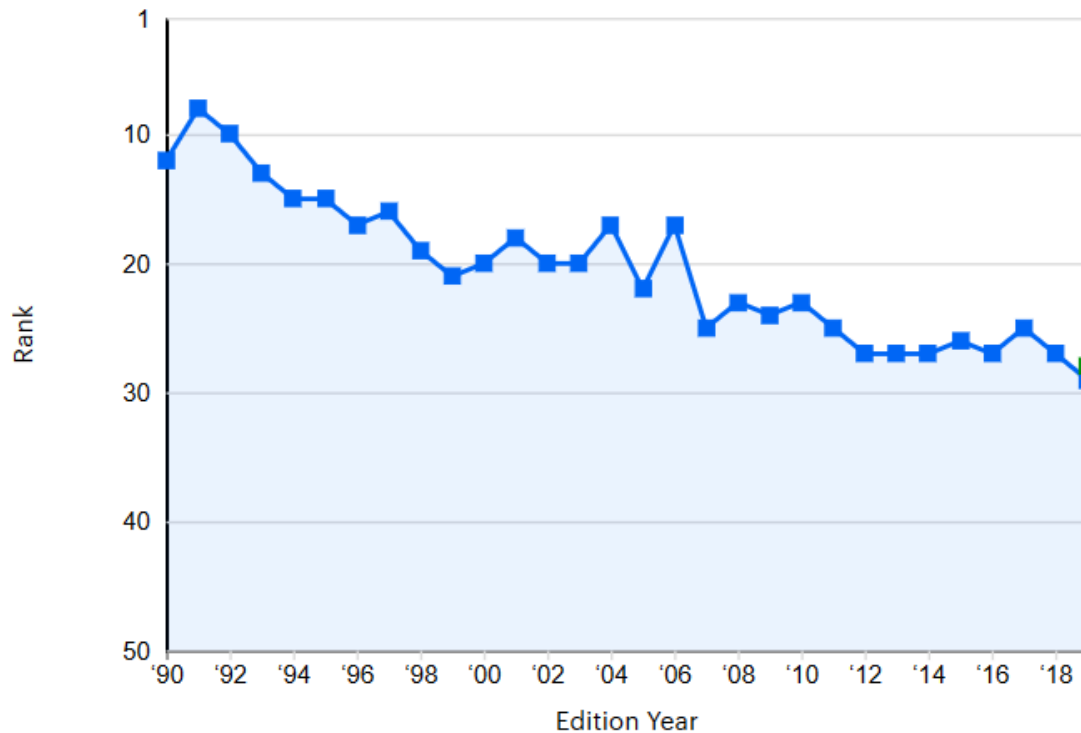
Why is it important to know how much is spent on public health programs?

- Increasing demands for accountability of public resources
 - educate stakeholders
- Budgets are constrained
 - need to maximize available resources
- Ongoing changes that impact public health system
 - emergencies (COVID-19), structural changes (ACA), shrinking workforce

Kansas Public Health

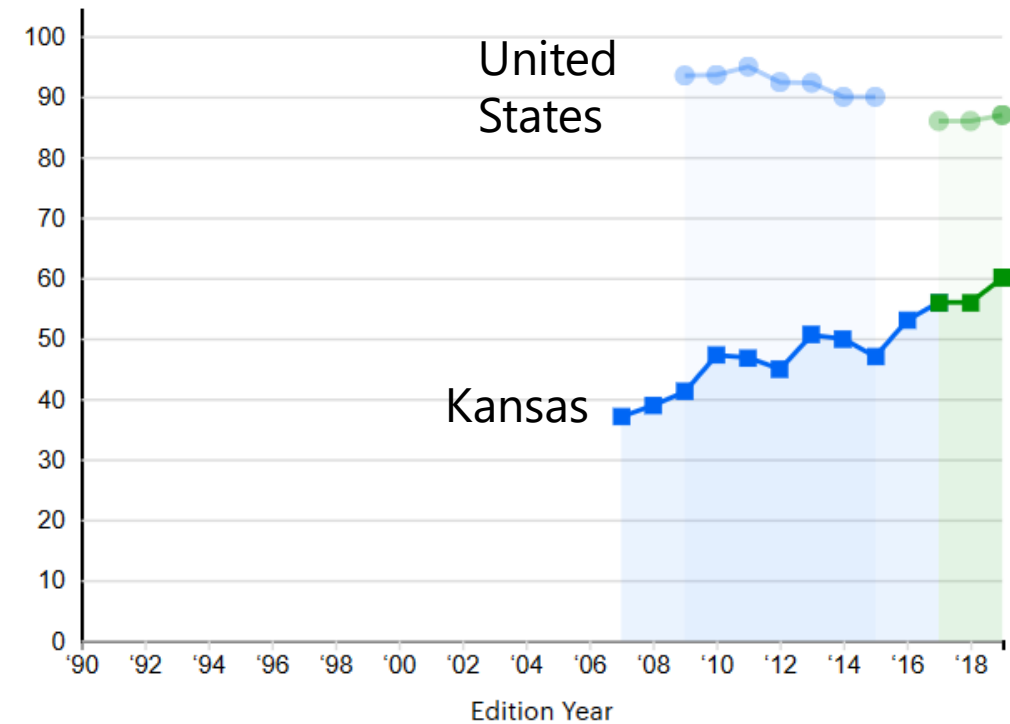
Health Ranking

composite



Funding

federal + state, per capita



<https://www.americashealthrankings.org/explore/annual/state/KS>

https://www.americashealthrankings.org/explore/annual/measure/PH_funding/state/KS

Core Measures

Behaviors

- Drug Deaths
- Excessive Drinking
- High School Graduation
- Obesity ←
- Physical Inactivity
- Smoking
- Behaviors

Outcomes

- Cancer Deaths
- Cardiovascular Deaths ←
- Diabetes ←
- Disparity in Health Status
- Frequent Mental Distress
- Frequent Physical Distress
- Infant Mortality
- Premature Death
- All Outcomes

Community & Environment

- Air Pollution
- Children in Poverty
- Community & Environment
- Infectious Disease
- Chlamydia ←
- Pertussis ←
- Salmonella ←
- Occupational Fatalities
- Violent Crime ←

All Determinants

- All Determinants

Policy

- Immunizations - Adolescents
- HPV Immunization Females
- HPV Immunization Males
- Meningococcal Immunization
- Tdap Immunization 👍
- Immunizations - Children
- Public Health Funding
- Uninsured
- Policy

Overall

- Overall

Clinical Care

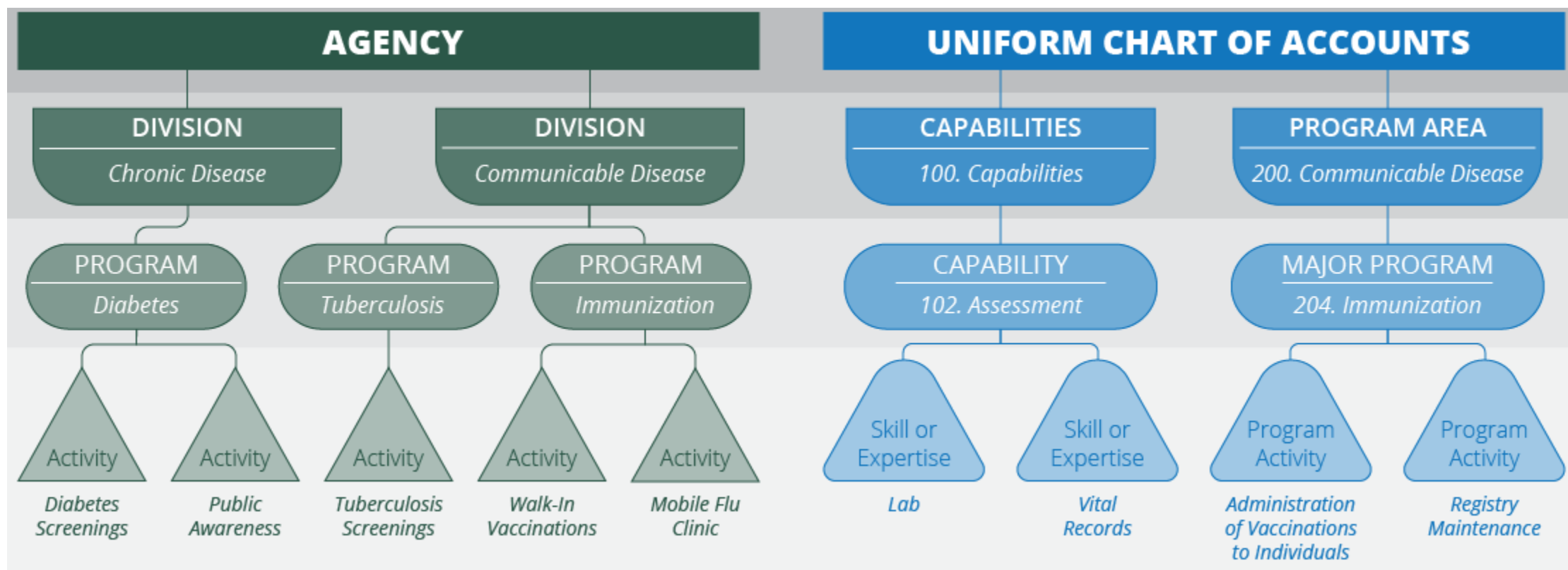
- Dentists
- Low Birthweight 👍
- Mental Health Providers
- Preventable Hospitalizations
- Primary Care Physicians
- Clinical Care

Capabilities	Program Areas						
	Communicable Disease Control	Chronic Disease Prevention	Injury Prevention	Environmental Public Health	Maternal, Child, and Family Health	Access to and Linkage with Clinical Care	Other Major Programs
All Hazards Preparedness And Response	Communicable Disease Epidemiology	Asthma	Firearms	Air	Coordination of Services	Eligibility Determination	Other Health Services
Assessment	Hepatitis	Cancer	Motor Vehicle	Fish and Shellfish	Direct Service	Health Care Licensing	Other Social Services
Communications	HIV/AIDS	Cardiovascular	Occupational Injuries	Food Safety	Family Planning	Other Access to and Linkage with Clinical Care	
Community Partnerships Development	Immunization	Diabetes	Senior Falls Prevention	Hazardous Substances and Sites	Newborn Screening		
Organizational Competencies	Sexually Transmitted Diseases	Obesity	Substance Abuse	Lead	Population-based Maternal, Child, and Family Health		
Policy Development And Support	Tuberculosis	Tobacco	Other Intentional Injuries	On-Site Wastewater	Supplemental Nutrition		
Other Capabilities	Other Communicable Disease Control	Other Chronic Disease Activities	Other Unintentional Injuries	Solid and Hazardous Waste	Other Maternal, Child, and Family Health		
				Water Zoonotic Other Environmental Public Health			

Core Health Measures ↔ UCOA

Core Health Measure	Uniform COA Program or Capability
Obesity	Obesity
Cardiovascular Deaths	Cardiovascular
Diabetes	Diabetes
Chlamydia	Sexually transmitted diseases
Pertussis Immunizations	Immunizations
Violent crime	Other intentional injuries
Policy	Policy Development and Support
Clinical Care	Access to and Linkage with Clinical Care

UCOA as Organization Chart



How it works

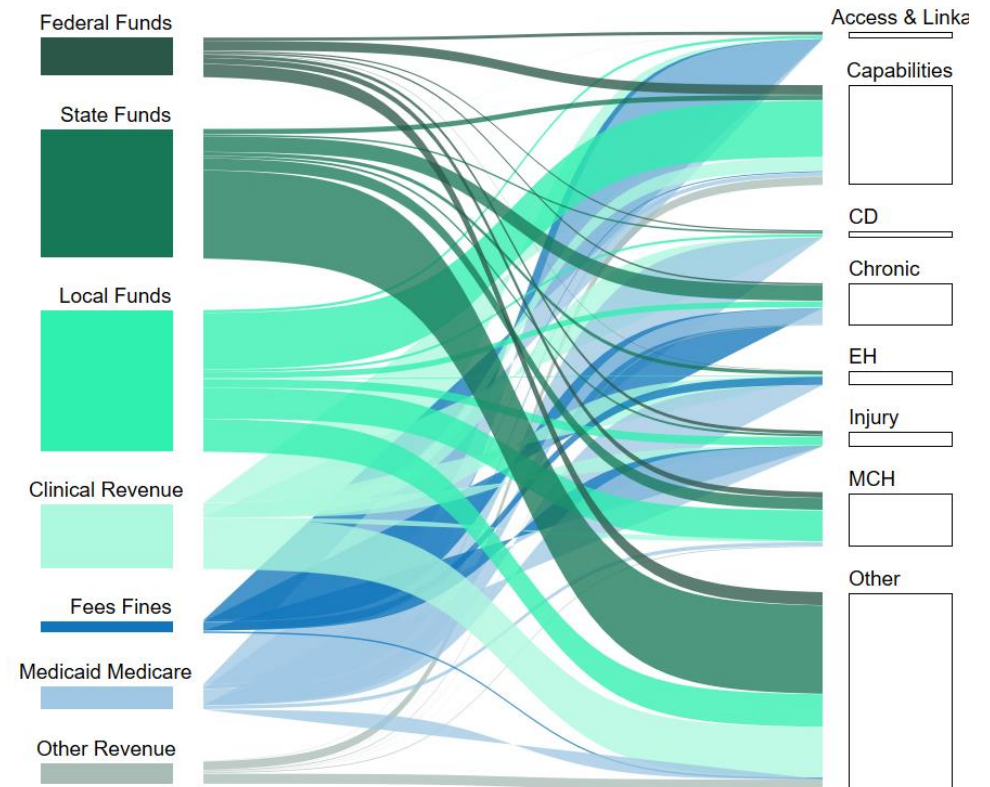
- The Uniform Chart of Accounts (UCOA) **complements** – but does not replace – participating public health agencies' COAs
- Public health agencies **crosswalk** – or map – financial information from their agency-specific COA to the UCOA
- Financial information reported includes **expenditures** and **revenues**, broken down into key categories
- Closed fiscal years

Using The UCOA Data

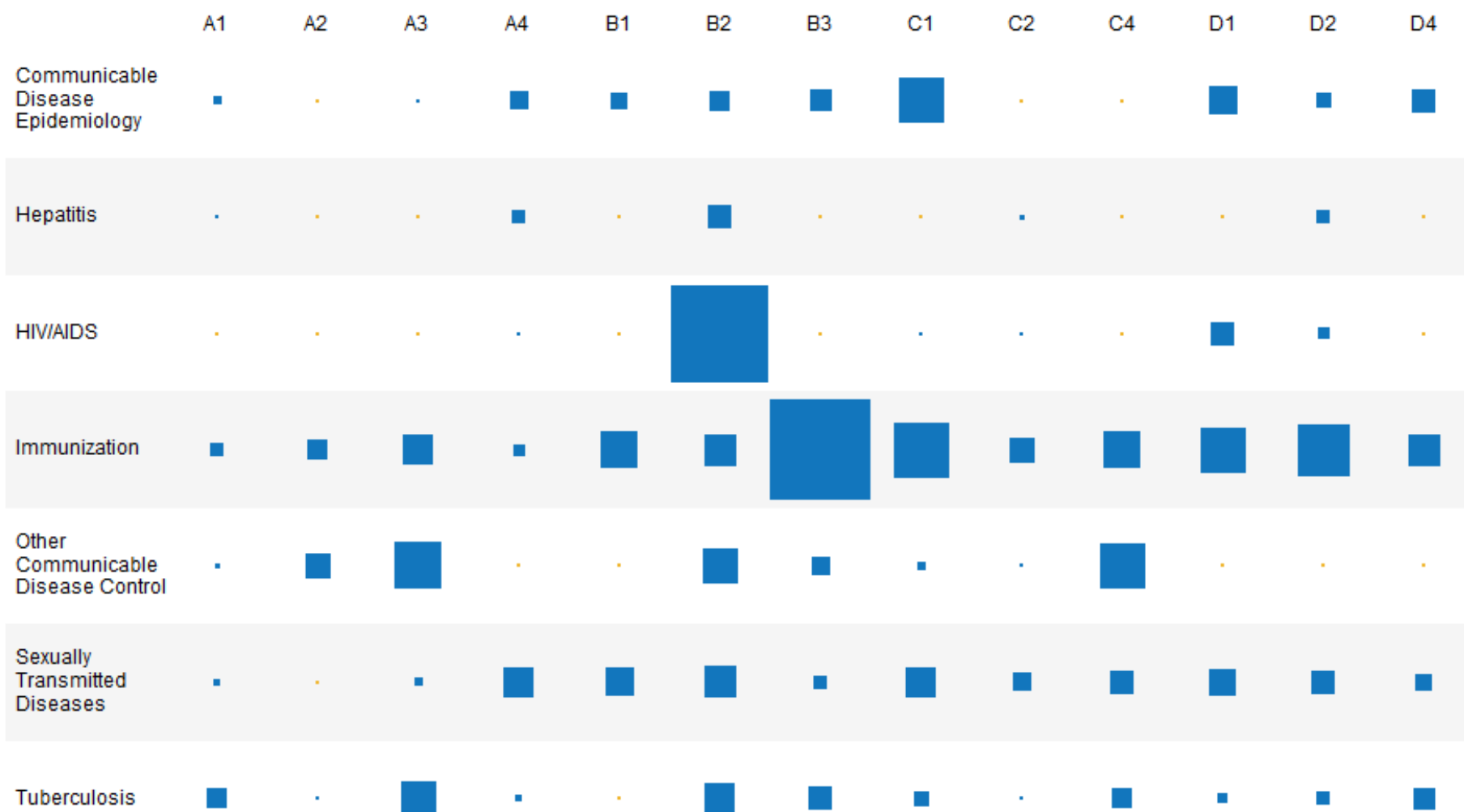
State and local agencies are using or planning to use UCOA data to:

- Support budgeting and external reporting
- Identify **gaps** in funding
 - Find programs that are “bleeding”
- Evaluate spending levels for **foundational capabilities**, and how they are funded

Where are revenues coming from?



Compare **Total Expenditures per capita** for **Communicable Disease Control's** major programs



UCOA Data

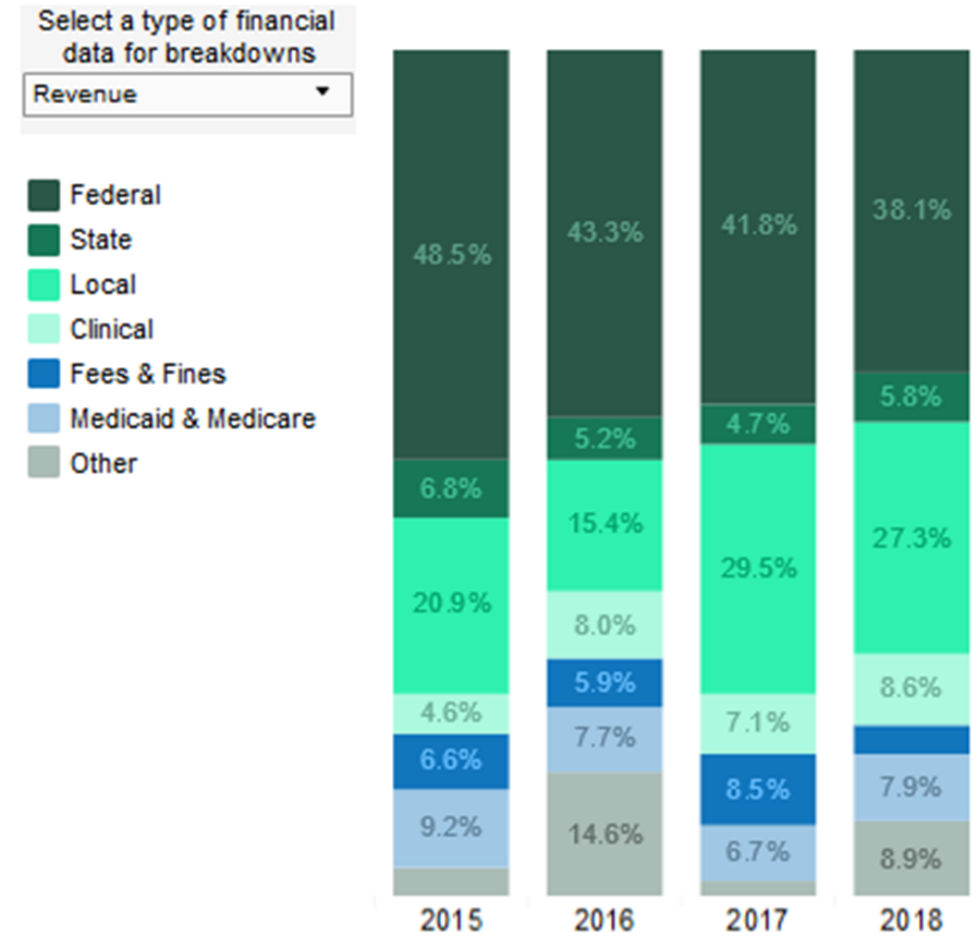
Comprehensive

- 50 Major Programs and Capabilities
- Expenditure and revenue categories

Annual

- Most recent closed fiscal year
- Multiple years of data encouraged

How have our total **Revenue** categories changed over time?



Becoming Involved

- Contact us: phast@uw.edu
- Review & sign MOU
- Complete online training & crosswalking, and report data
- Access data dashboard for all participating agencies
- (Optional) Share your experience with PHAST staff
- (Optional) Provide input on training module

Learn more at our website: coa.phastdata.org

View public visualizations: phastdata.org/viz/coa-dashboard