

MLC-3 in Kansas

Lower 8 of Southeast Kansas

Counties: Chautauqua, Cherokee, Crawford, Elk, Labette, Montgomery, Neosho, and Wilson

Serving a population of: 154,883

QI Team Members:

- Ruth Bardwell
- Todd Durham
- Debbi Baugher
- Betha Elliott
- Jeanie Beason
- Janis Goedeke
- Kandy Dowell
- Teresa Starr

Quality Improvement Story Board



Improving Access to Prenatal Care in the First Trimester

Plan

1. Background

The Lower 8 of Southeast Kansas collaborated to address barriers to early prenatal care. We had noticed that young women were not receiving prenatal care during the first trimester of their pregnancy.

Statistical information was downloaded from KDHE/KIC (Kansas Information for Communities) to determine if this was true of all age groups or if there was a specific age which needed to be addressed. The 15–24 year age group was more likely to receive inadequate prenatal care. Between 2003–2007, 35 percent of women in this age group did not receive prenatal care in the first trimester. There were 77 births which received no prenatal care.

After reviewing data and collecting anecdotal information, it was decided that a lack of insurance was the most likely contributing factor. The application process for Medicaid/CHIP seemed to be the bottleneck.

2. Aim Statement

By Dec. 31, 2009, we will promote an increase of 2 percent in the enrollment of eligible pregnant women in the Medicaid/CHIP program during the first trimester of pregnancy over the previous quarter's Women, Infants and Children (WIC) data. Assistance in completing the application and faxing the application to the Kansas Health Policy Authority will be offered to all eligible women.

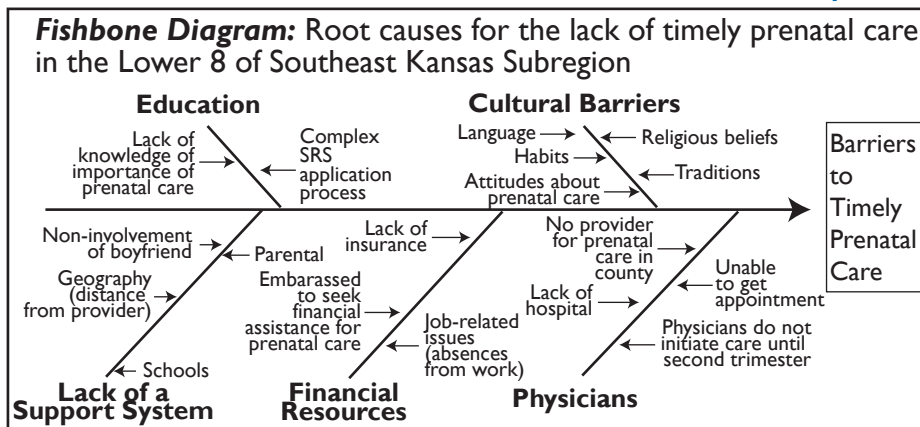
3. Examine the Current Approach

Current practices and processes revealed:

- Lack of a uniform approach within a public health region.
- Need for educational information.
- Need for comprehensive Maternal and Child Health (MCH) services.
- Need for Medicaid/CHIP application assistance.

4. Identify Potential Solutions

Provide assistance to pregnant women with the Medicaid/CHIP application process.



7. Study the Results

Evaluation of implemented intervention took place in October–November 2009 by:

- Review the survey information collected from WIC clinics of newly pregnant enrollees for the months of July–September. There were 76.6 percent of Medicaid/CHIP women who received first trimester care in this time period, an increase of 7.4 percent.

- Conduct staff meeting to get feedback from all eight health departments on new process.
- Share feedback with Lower 8 MLC-3 team members.

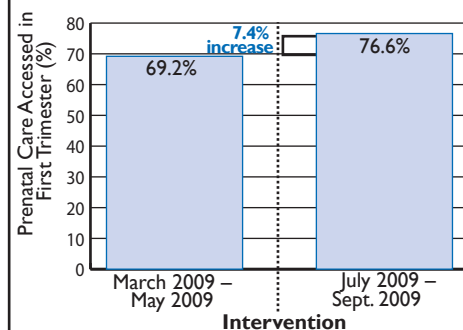
Do

6. Test the Theory

The region:

- Reviewed best practices and recommendations for increasing the timeliness of prenatal care.
- Collected WIC data for March–May, 2009 for a measurement baseline.
 - There were 69.2% of Medicaid/CHIP women who received first trimester care in this time period.
- Combined the questionnaire and checklist into a one-page document.
 - Standardized existing pregnancy/history form.
 - Made a sample of the Medicaid/CHIP application.
 - Developed a checklist for the health departments' staff to use.
- Provided training to all staff regarding the utilization of forms and the application process.
- Tested the standardized questionnaire/checklist in the Lower 8 health departments beginning July 1, 2009.

First Trimester Prenatal Care Access Among Medicaid/CHIP Beneficiaries



Act

8. Standardize the Improvement

- Continue use of the questionnaire/checklist to assist in uniformity and continuity.
- Continue to provide assistance with Medicaid/CHIP application process.

9. Establish Future Plans

- Continue to gather WIC data on a semi-annual basis.
- Analyze data to determine if theory continues to achieve the desired outcome.