

Top Ten List: What I've Learned About Partnerships

Tuesday, June 17, 2008

KALHD Mid-Year Meeting

Grace Gorenflo, MPH, RN
Project Director



NACHO versus NACCHO

NACHO

Definition: [NAH-choh] A crisp tortilla chip topped with melted cheese (usually cheddar) and chopped chiles, usually served as an appetizer or snack. Nachos sometimes appear on menus as "Mexican pizza," in which case they generally have additional toppings such as cooked, ground chorizo, onions and sometimes olives.



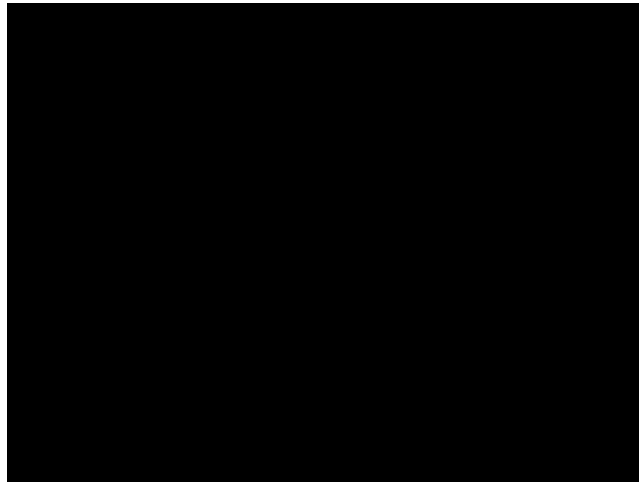
NACCHO

Definition: [NAY-choh] An association of dedicated public health professionals who represent over 3,000 local public health agencies (including city, county, metro, district, and Tribal agencies).

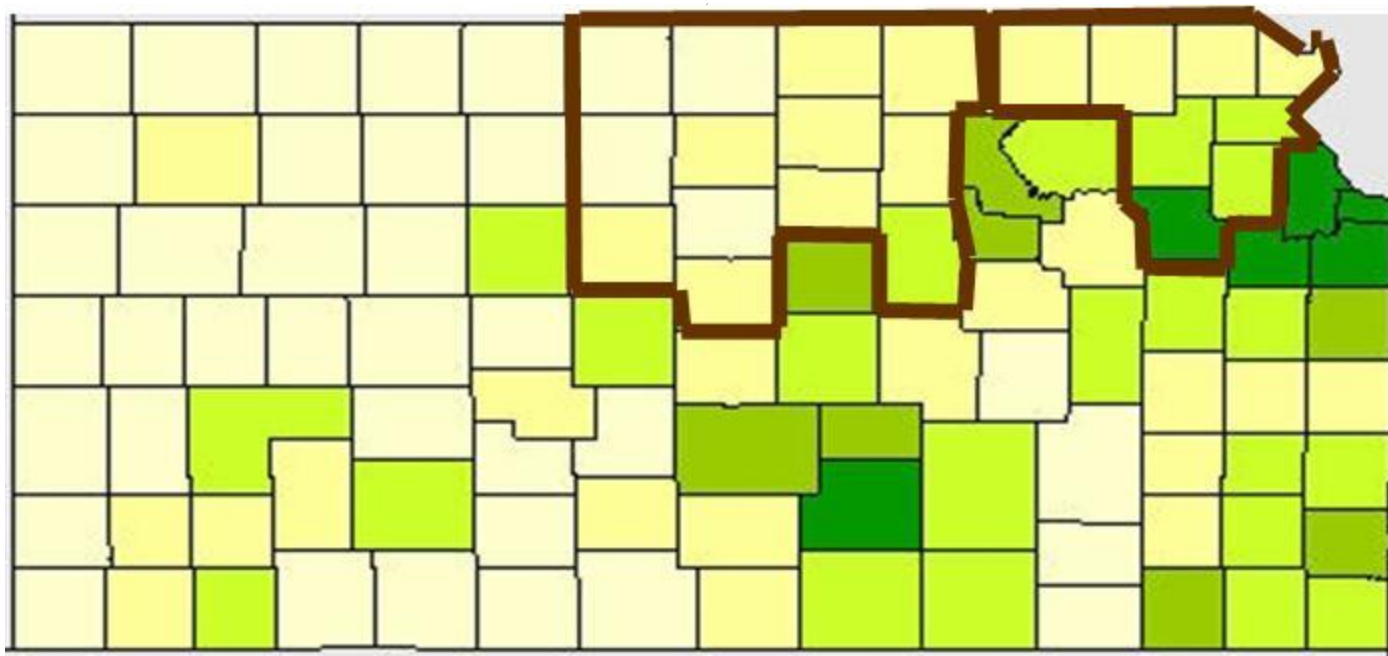


Tuesday, April 1, 2008

What is Public Health?



Magical Mystery Tour



#10: National Partnerships Support the Local Level....

...whether you knew that or not!

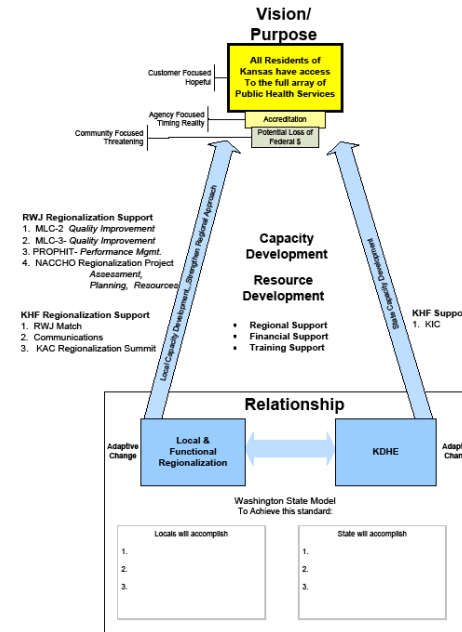
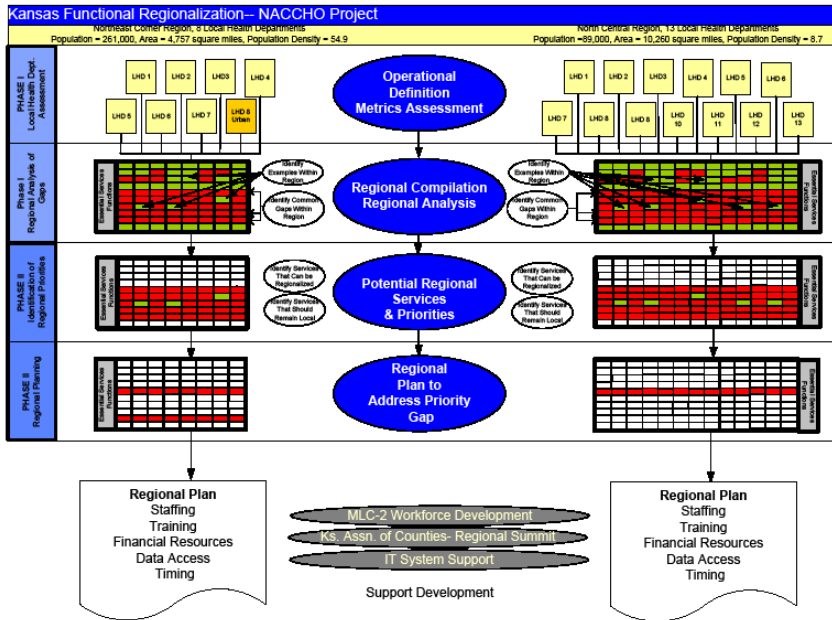
PHAB
NACCHO
ASTHO
NALBOH
APHA
NNPHI
PHF
RWJF
CDC

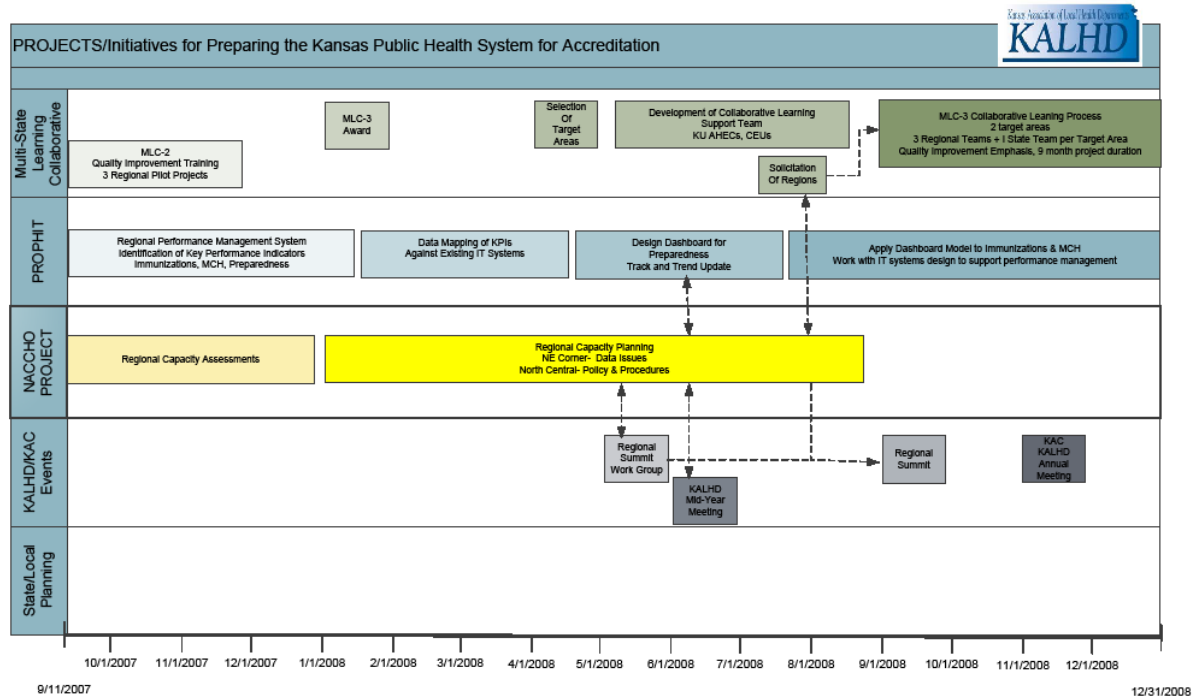
NACCHO
National Association of County & City Health Officials

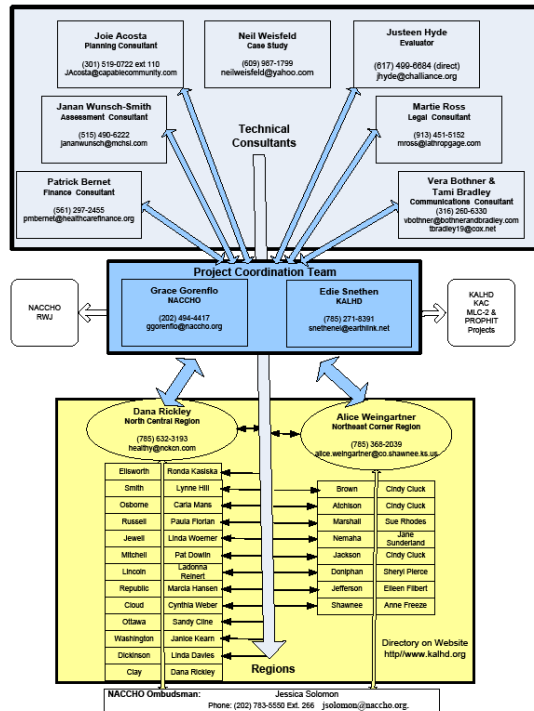


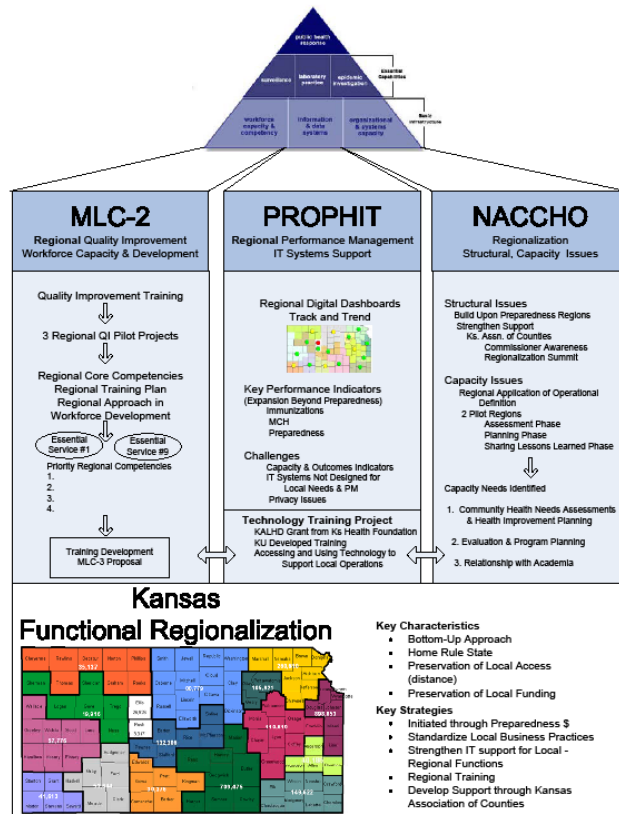
Tuesday, April 1, 2008

#9: If Edie can't generate a graphic of it, the relationship probably doesn't exist









#8: Partnerships are critical to fulfilling the essential services

- Collecting and analyzing data
- Developing compelling messages
- Ensure best public health laws and regulations

Other LHDs

KALHD

KDHE

KHF

KHI

NACCHO
National Association of County & City Health Officials



Tuesday, April 1, 2008

#7: Bison. Not Pretty.



#6: All local public health is local.....

...except when it isn't.



#5: Sunflowers



#4: NACCHO is an important partner



Tuesday, April 1, 2008



Accreditation-Related Efforts

A number of states have programs that address performance improvement, certification, or accreditation for LHDs. Click on the colored states to view information, including how they use the Operational Definition. [More >](#)



Quality Improvement

Quality Improvement (QI) is an important part of the national accreditation program. These resources guide beginning or existing QI efforts as a part of accreditation preparation. [More >](#)

RELATED INFORMATION

Communications Toolkit



This communications toolkit offers practical methods and modern ideas for LHDs to communicate more successfully about local public health. [More >](#)

National Accreditation



The Public Health Accreditation Board (PHAB) was established for health department accountability and QI. Read about the program



SIGN UP for NACCHO's accreditation e-newsletter! [>](#)



Accreditation & Quality Improvement Events [>](#)



Connect with Colleagues through the Peer Assistance Network [>](#)

RELATED ISSUES



History of Public Health Accreditation [>](#)



MAPP Tools and Processes [>](#)



CDC's National Public Health Performance Standards Program [>](#)

» Program Spotlight



Model Practice Program [>](#)

» Annual Conference



2008
ASTHO-NACCHO
2008 Joint
Conference [>](#)

Sacramento, CA
Sept. 9-12, 2008

#3: Oh Beautiful for Spacious Skies



NACCHO
National Association of County & City Health Officials

Tuesday, April 1, 2008

#2: Partnerships begin with you

The 10 Essential Public Health Services



NACCHO
National Association of County & City Health Officials

Tuesday, April 1, 2008

#1: James Brown's got nothing on you!



NACCHO Project Team

Grace Gorenflo, Project Director

Jessica Solomon, Program Manager

Penney Davis, Senior Analyst

Travis Parker Lee, Program Assistant



Tuesday, April 1, 2008