



# Shawnee County Health Agency

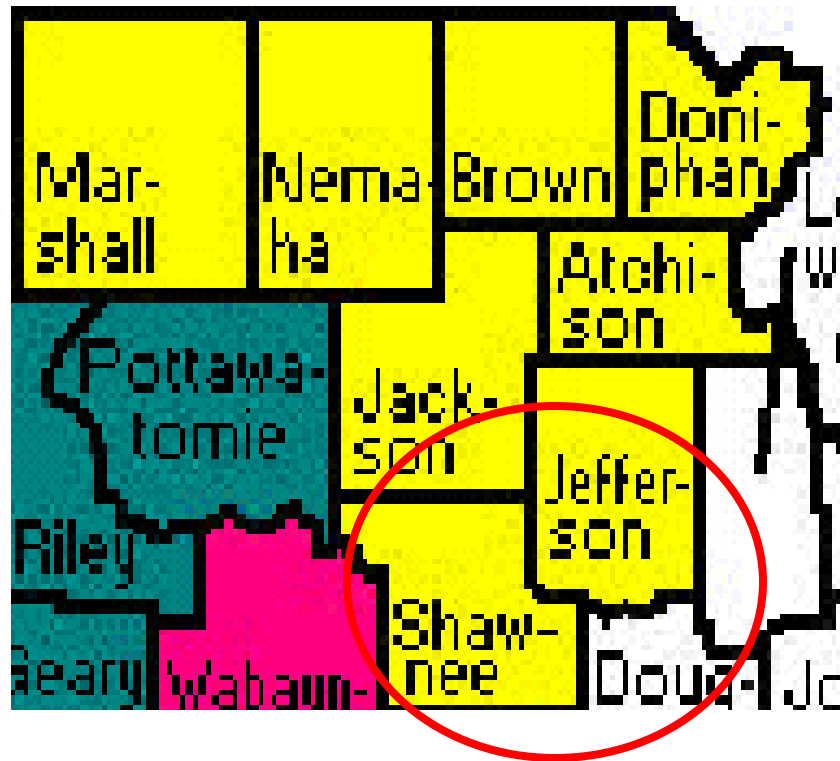
*Leading the way to a healthier Shawnee County*

## Improving Access to Prenatal Care in the 1<sup>st</sup> Trimester for Women With Limited Resources in Shawnee and Jefferson Counties

MLC-3 Project  
Northeast Corner Subregion



# Northeast Corner Subregion





# Shawnee County Health Agency

*Leading the way to a healthier Shawnee County*

## Shawnee County

- Urban
- Population – 174,709
- Race / Ethnicity –
  - White – 85.7%
  - Hispanic – 8.7%
  - Black – 9.2%
  - Other – 5.1%

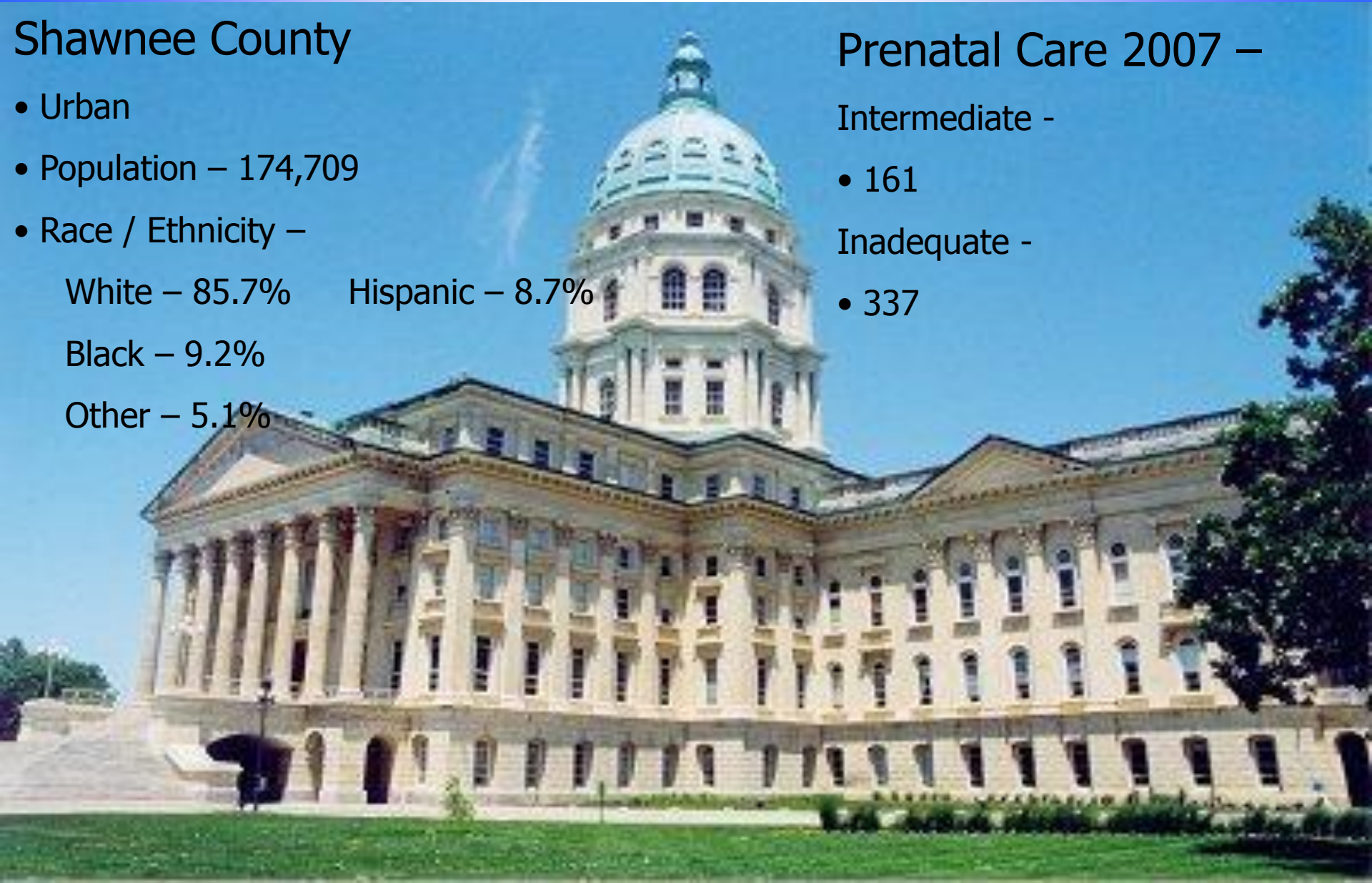
## Prenatal Care 2007 –

Intermediate -

- 161

Inadequate -

- 337





# Shawnee County Health Agency

*Leading the way to a healthier Shawnee County*

## Jefferson County –

- Rural
- Population – 18,421
- Race / Ethnicity –
  - White – 96.3%
  - Black – .8%
  - Other – 2.9%
  - Hispanic – 1.7%

## Prenatal Care 2007 –

Intermediate -

- 17

Inadequate -

- 23

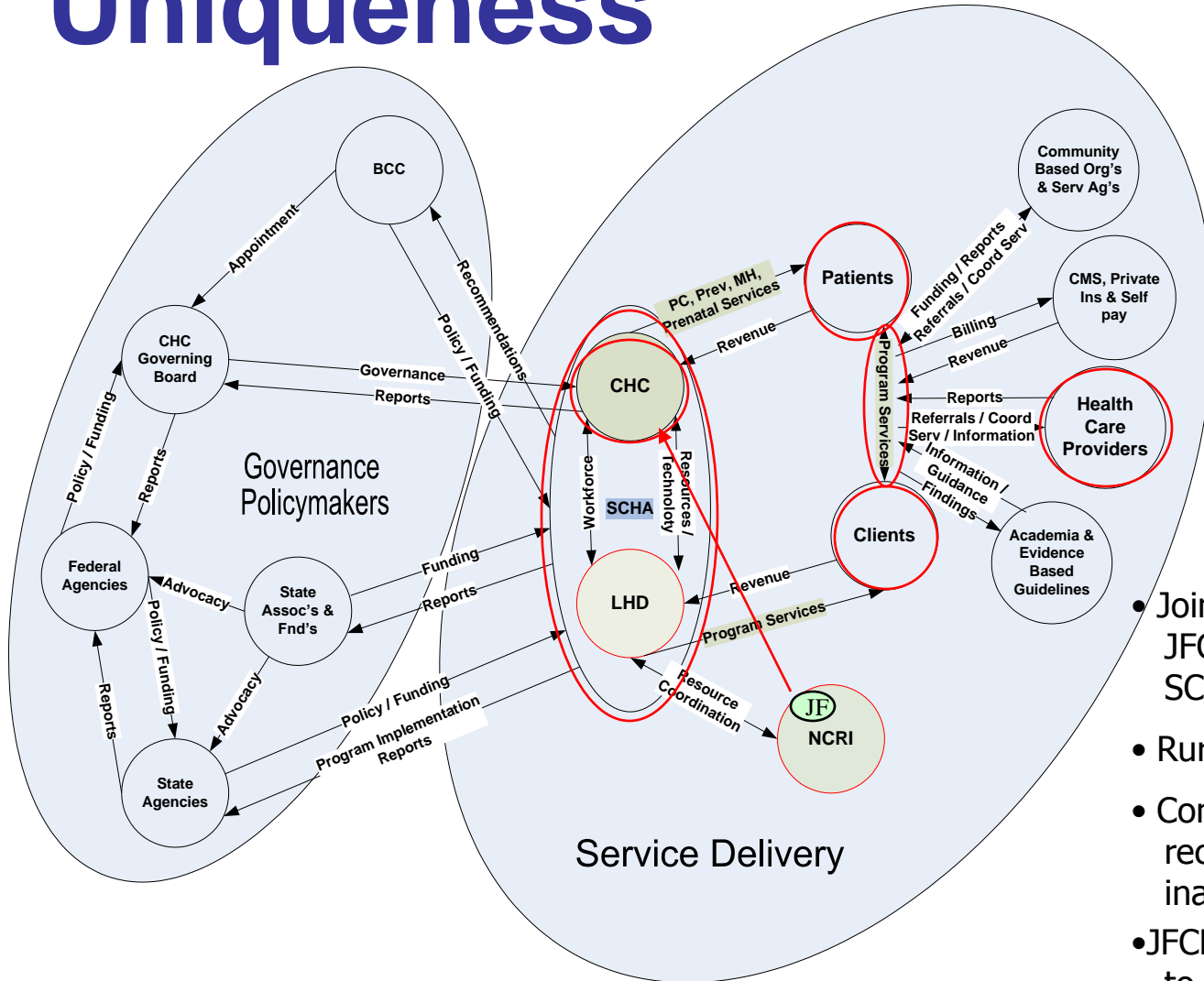


**Photographer**

Dana Janus



# Uniqueness



- Joint effort by SCHA-LHD and JFCHD WIC, HSHV, JFCHD-FP, & SCHA-LHD STD clinic services
- Rural combined with Urban
- Combined total of 538 women receiving intermediate or inadequate prenatal care in 2007
- JFCHD refers out for prenatal care to SCHA-CHC M&I prenatal clinic
- Included SCHA-CHC FP program



# Shawnee County Health Agency

*Leading the way to a healthier Shawnee County*



## SCHA-CHC M&I Clinic 2008

- Served 669 Pregnant Women
- Increase of 176 pts over 2007
- 38% increase in 20-24 yr olds
- 41% increase in 25-44 yr olds

### 1<sup>st</sup> Trimester

- 340

### 2<sup>nd</sup> Trimester

- 317

### 3<sup>rd</sup> Trimester -

- 12





# Aim Statement

- "Provide assistance to 90% of pregnant women accessing services through LHD and CHC services, who do not identify a prenatal care provider, to make a prenatal care appointment with the SCHA-CHC Maternal & Infant program."