

# MLC 3 Learning Session 2

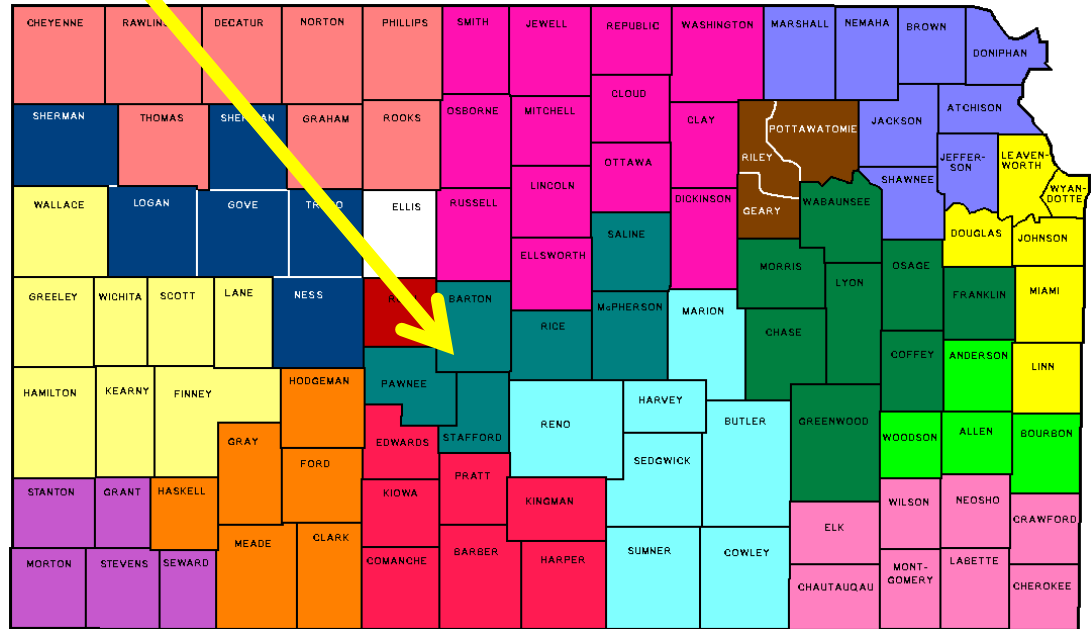
## Region/Community Profile

Central KS Region

June 14, 2010

# Who are we?

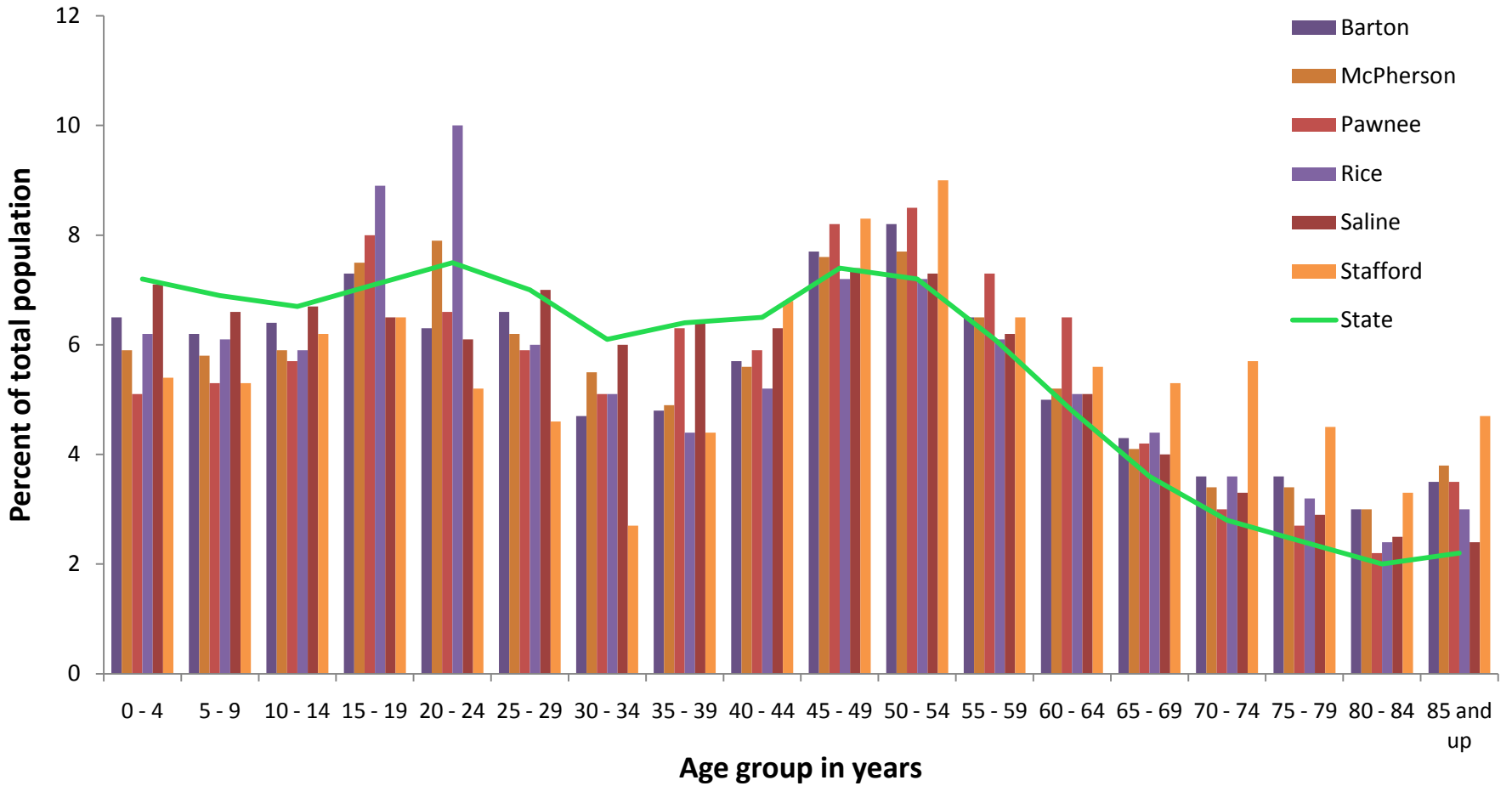
- **Stafford County**
  - Pop. 4326
- **Pawnee**
  - Pop. 6291
- **Rice**
  - Pop. 10060
- **Barton**
  - Pop. 27703
- **McPherson**
  - Pop. 29044
- **Saline**
  - Pop. 54657



- **Assembled demographic data first**
  - Practice with data websites
  - Overcome technology challenges

# Demographics

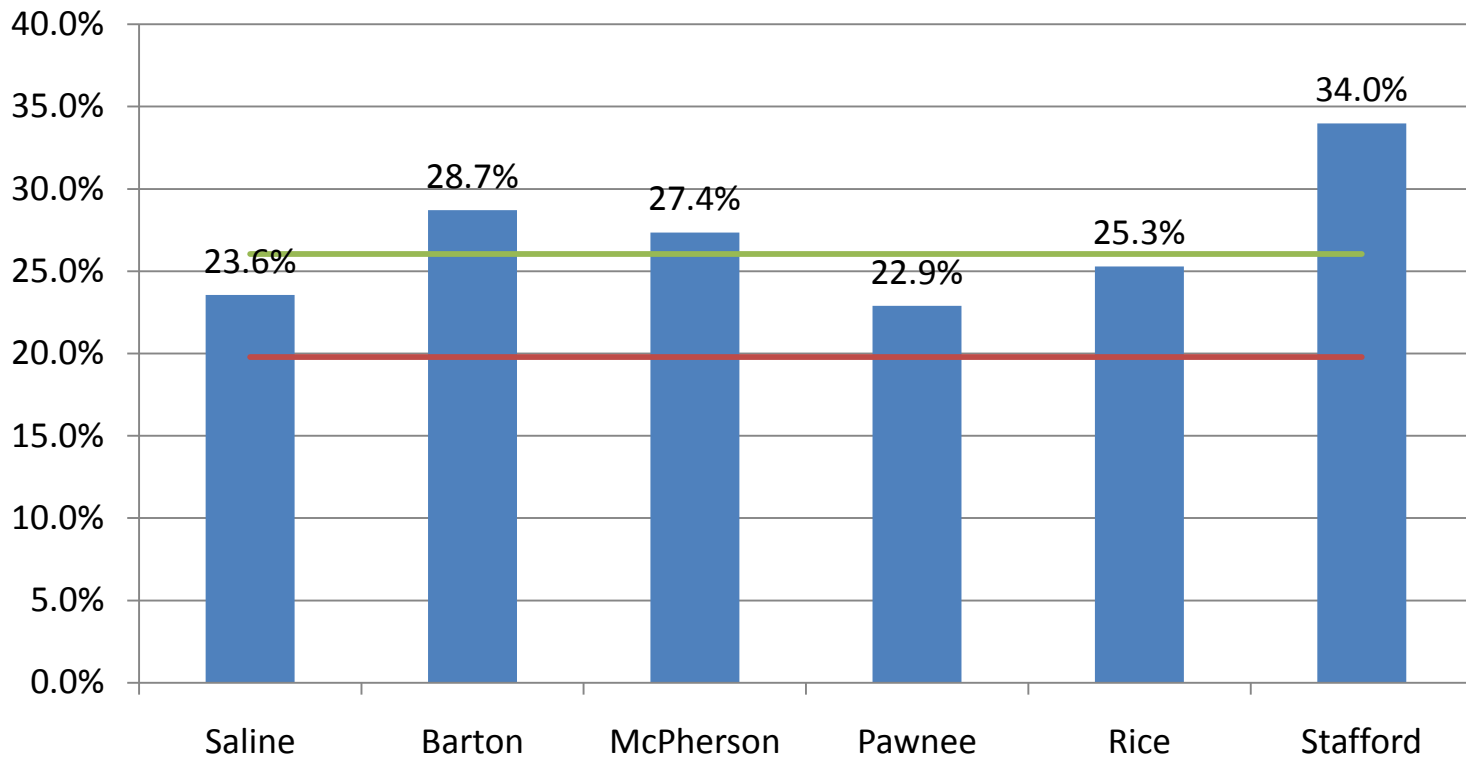
## Central KS Region Population Distribution By Age Group and County



# Aging Population

## Elderly Age Dependency Ratio Central KS Region

— State 19.8%  
— CK Region 26.04%

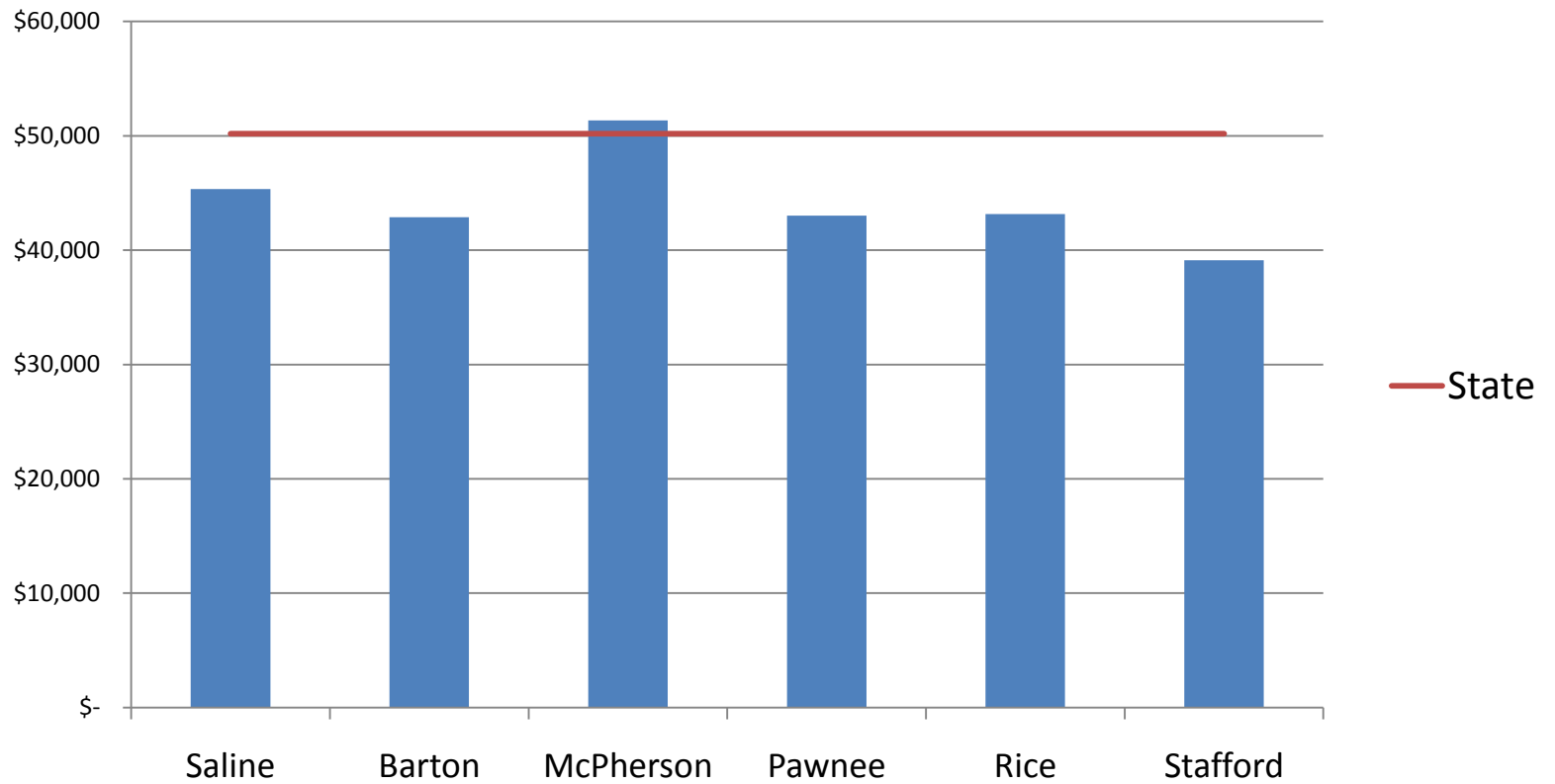


# Approach to data assembly

- Each individual county assembled their data and populated their worksheets
- Team leader collated data and populated worksheets with every county's data side by side
- Group came together to review and discuss
  - Similarities and common issues among counties
  - Differences and county specific issues
  - “Hmmm? I wonder what that's all about?”
- Comparison with peer counties

# Economics

## Median Estimated Annual Household Income 2009

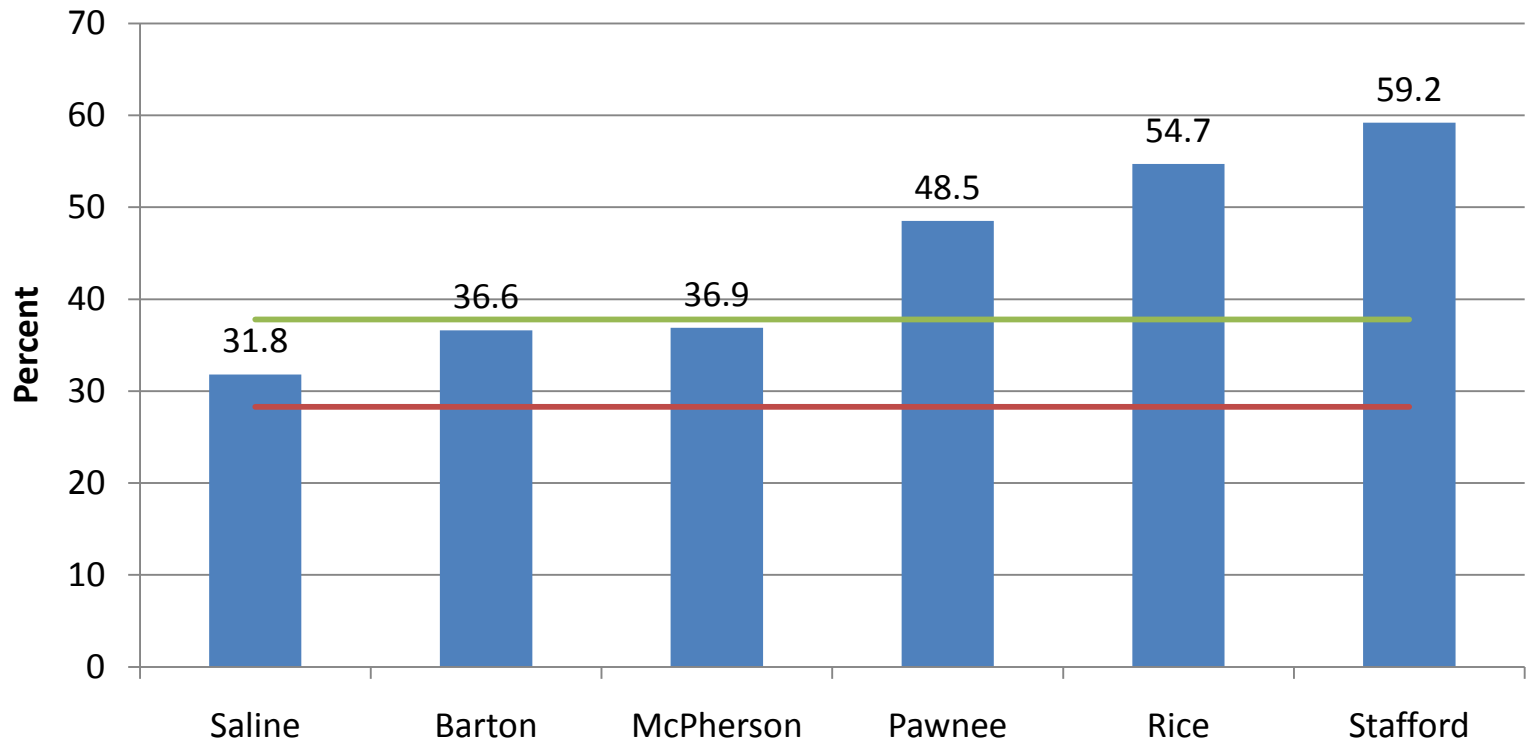


# Common Issues

Percent of housing units  
built before 1950

State 28.3%

CK Region 37.8%

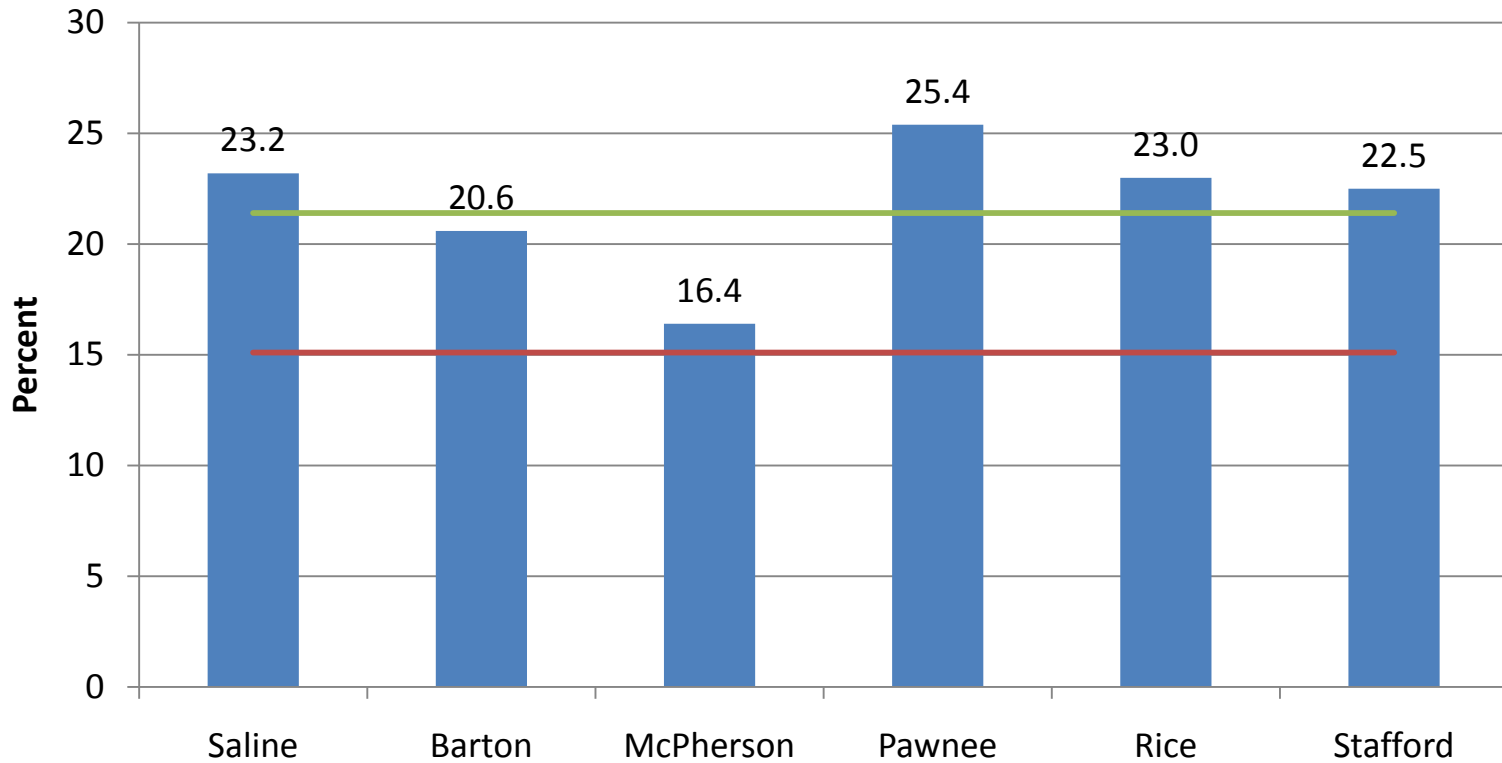


# Common Issues

Percent of women who report having smoked during pregnancy

State 15.1%

CK Region 21.4%



# Lessons Learned: Reality

- Complex factors drive the health issues and needs in a community
  - Demographics
  - Economics
  - Behaviors
- Need to dig deeper into data and engage community partners early in the process
  - What is the real problem?
  - How significant is it?
  - Contributing factors?

# Lessons Learned

- Ensure valid comparisons between counties and with state data
  - “Same” data reported from different sources may not be the “same”
    - Definition of indicator
    - Time frame
- Small numbers of events
  - Some data wasn’t available due to small numbers, but few events in a small population may be significant
  - What impact will this have on our ability to obtain county specific data?